

Cottage Stone

Cottage Stone

- *Functionality and performance in one package!*
- *Interlocking rear lip for automatic setback and alignment!*
- *Perfect for terraced gardens, tree rings or low retaining walls!*

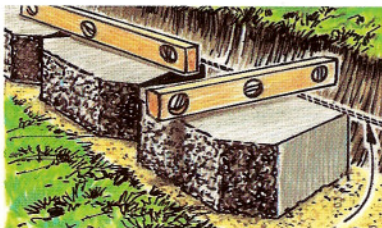


Installing a Cottage Stone wall...



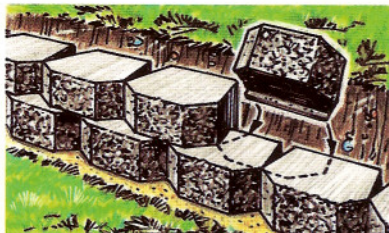
1. Dig the Foundation

Dig a trench 3 to 4 inches deep and 12 inches wide. Level the soil; then compact it firmly. A solid foundation is essential. One inch of sand in the bottom of the trench will make leveling the first course easier.



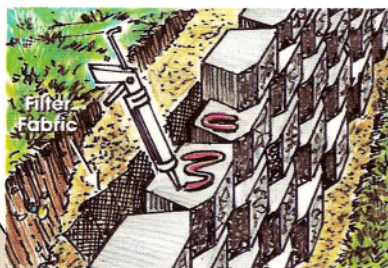
2. Install Cottage Stone

Install Cottage Stone with textured rockface forward and interlocking lip down in the trench. Level unit in all directions. Install entire base course, making sure units touch each other. A string line at the back of the units is helpful in creating straight walls.



3. Add More Courses

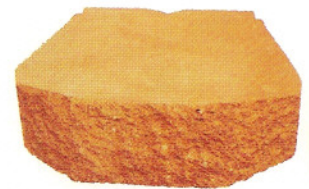
Position the next row of Cottage Stone units on the top of the base row. The second row of units will be offset 1/2 unit from the row below. The interlocking lip is always down and it goes behind the unit below it. This creates the automatic setback of 1 inch.



4. Backfill / Secure Top Course

Backfill and compact behind the units as you finish each row. Clean granular fill is recommended. Brush excess soil off the top of the units before installing the next row. If desired, filter fabric may be used behind the units to prevent soil particles from coming through the wall. Secure the top course of units with construction adhesive.

Cottage Stone Specifications*



Size	4"H x 12"W x 8-1/2"D
Weight	26-1/2 lbs.
Area	1/3 sq. ft.
Setback	1"
Radius	2'1"
Wall Height ..	up to 2.5 feet
Strength	3000 PSI minimum
Absorption ...	6% maximum

*Actual unit weight, size, compression strength manufactured to meet specification guidelines may vary in your region.

Made worldwide under license from
ROCKWOOD Retaining Walls, Inc.